

MCGRAW SECONDARY SCHOOL Enrollment (2014 - 15)

K-12 Enrollment: 281

These enrollment data are collected as part of NYSED's Student Information Repository System (SIRS). These counts are as of "BEDS Day" which is typically the first Wednesday in October. Available are enrollment counts for public and charter school students by various demographics for the 2014 - 15 school year. For nonpublic school enrollment data please see the [Non-Public School Enrollment and Staff](#) information on our Information and Reporting Services webpage

Students by Gender

Male		Female	
141	50%	140	50%

Students by Ethnicity

American Indian or Alaska Native	Black or African American	Hispanic or Latino	Asian or Native Hawaiian/Other Pacific Islander	White	Multiracial
1	4	2	3	267	4
0%	1%	1%	1%	95%	1%

Other Groups

Limited English Proficient Students		Students with Disabilities		Economically Disadvantaged Students	
—	—	53	19%	131	47%

*Fields with dashes have data suppressed in order to prevent reporting personally identifiable information.

Students by Grade

6th Grade	7th Grade	8th Grade	9th Grade	10th Grade	11th Grade
53	41	38	35	42	36
12th Grade					
36					

High School Completers (2014 - 15)

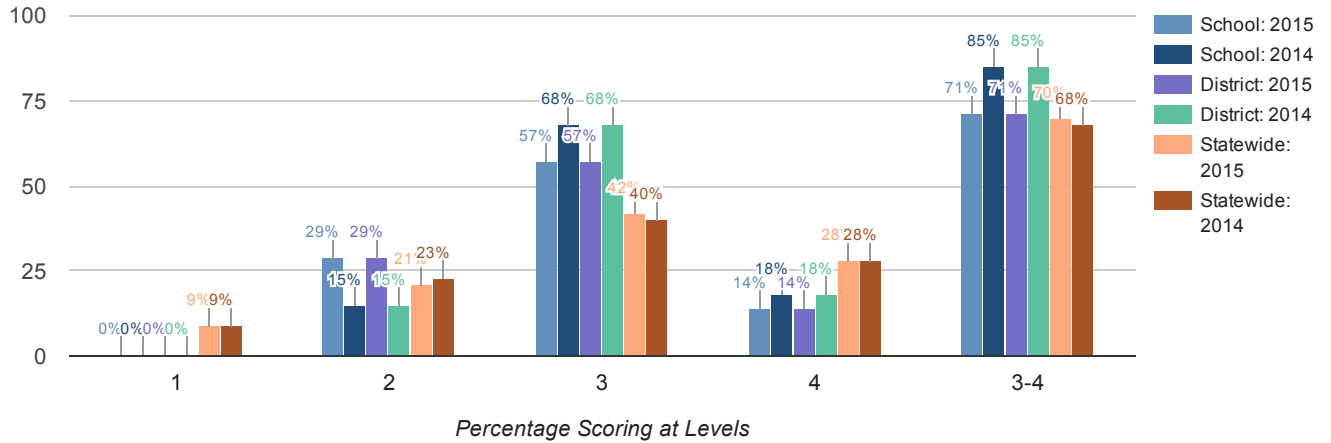
Results by Student Group	Completers (Graduates + IEP Diplomas)	Graduates (Regents + Local Diplomas)	Regents Diploma		Regents with Advanced Designation	
	Number of Students	Number of Students	Number of Students	Percent of Graduates	Number of Students	Percent of Graduates
All Students	35	35	30	86%	12	34%
General Education	–	–	–	–	–	–
Students with Disabilities	–	–	–	–	–	–
Results by Student Group	Regents with CTE Endorsement		Local Diplomas		Commencement Credentials	
	Number of Students	Percent of Graduates	Number of Students	Percent of Graduates	Number of Students	Percent of Completers
All Students	6	17%	5	14%	0	0%
General Education	–	–	–	–	–	–
Students with Disabilities	–	–	–	–	–	–

High School Non-completers (2014 - 15)

Results by Student Group	Dropped Out		Entered Approved High School Equivalency Preparation Program		Total Noncompleters	
	Number of Students	Percent of Students	Number of Students	Percent of Students	Number of Students	Percent of Students
All Students	–	–	–	–	–	–
General Education	–	–	–	–	–	–
Students with Disabilities	–	–	–	–	–	–

Grade 8 Science

Data in the bar charts include those for grade 8 students who took the New York State Grade 8 Science Test and grade 8 students who took a Regents science test in lieu of this test. Mean scores and data in the table for grade 8 science include only those for grade 8 students who took the New York State Grade 8 Science Test.



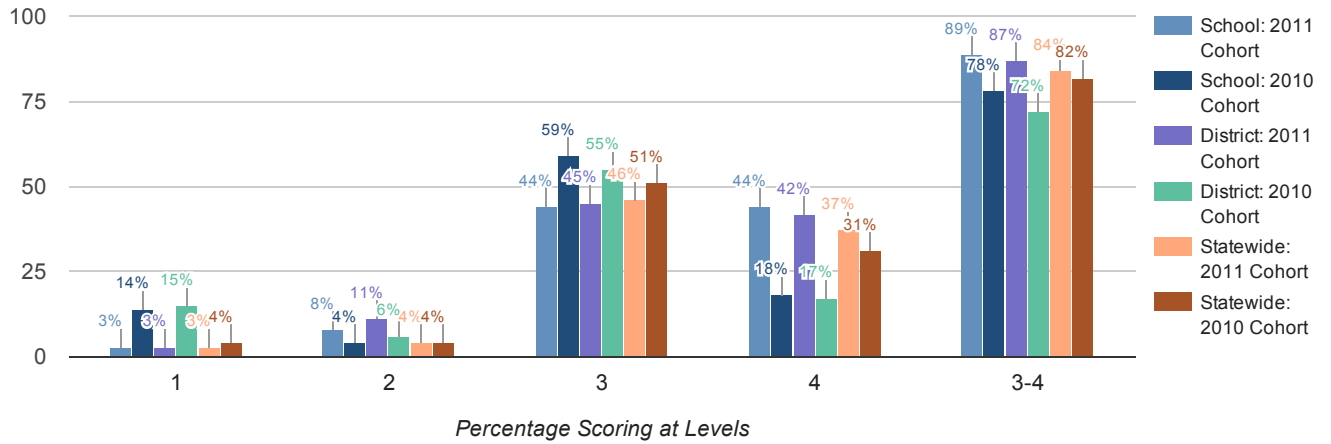
Mean Score

	2015				2014			
	70				75			

	2015	2014	2015	2014	2015	2014	2015	2014	2015	2014	2015	2014
All Students	21	0	29	57	14	71	34	0	15	68	18	85
General Education	16	0	25	56	19	75	27	0	7	70	22	93
Students with Disabilities	5	0	40	60	0	60	7	0	43	57	0	57
Asian or Native Hawaiian/Other Pacific Islander	0	0	0	0	0	0	1	-	-	-	-	-
Black or African American	0	0	0	0	0	0	1	-	-	-	-	-
White	21	0	29	57	14	71	31	-	-	-	-	-
Multiracial	0	0	0	0	0	0	1	-	-	-	-	-
Small Group Total	0	0	0	0	0	0	34	0	15	68	18	85
Female	9	0	44	33	22	56	19	0	16	58	26	84
Male	12	0	17	75	8	83	15	0	13	80	7	87
English Proficient	21	0	29	57	14	71	34	0	15	68	18	85
Economically Disadvantaged	9	0	44	44	11	56	18	0	11	83	6	89
Not Economically Disadvantaged	12	0	17	67	17	83	16	0	19	50	31	81
Not Migrant	21	0	29	57	14	71	34	0	15	68	18	85

Total Cohort Results in Secondary-Level English Language Arts after Four Years of Instruction

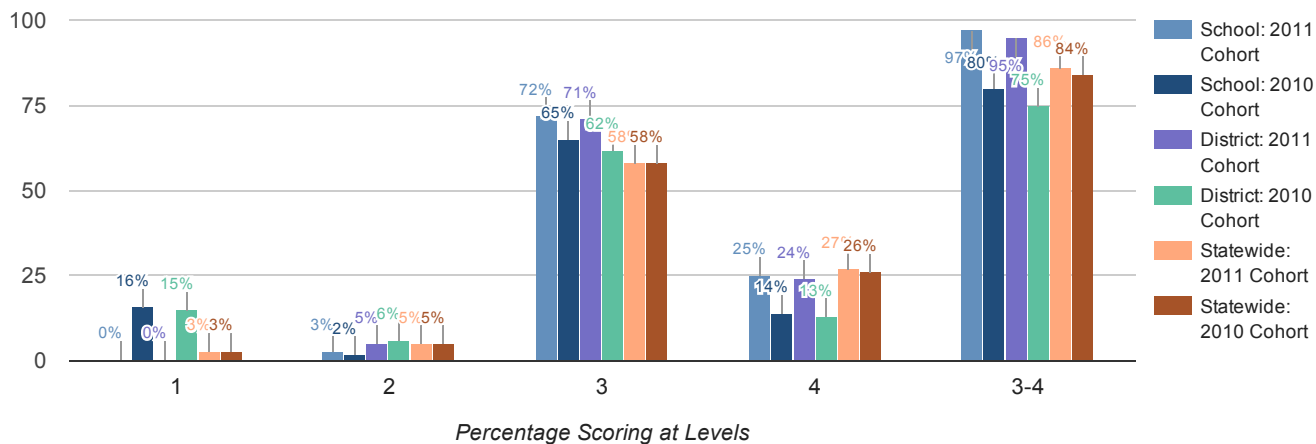
Total cohort results are those for New York State Regents and alternatives to Regents examinations only.



Results by Student Group	2011 Cohort						2010 Cohort					
	Number of Students	Percent Scoring at Level(s)				% Proficient (Levels 3 & above)	Number of Students	Percent Scoring at Level(s)				% Proficient (Levels 3 & above)
		1	2	3	4 & above			1	2	3	4 & above	
All Students	36	3	8	44	44	89	49	14	4	59	18	78
General Education	31	0	0	48	52	100	36	0	0	72	25	97
Students with Disabilities	5	20	60	20	0	20	13	54	15	23	0	23
American Indian or Alaska Native	1	-	-	-	-	-	0	0	0	0	0	0
Asian or Native Hawaiian/Other Pacific Islander	1	-	-	-	-	-	0	0	0	0	0	0
Hispanic or Latino	0	0	0	0	0	0	1	-	-	-	-	-
White	34	-	-	-	-	-	48	-	-	-	-	-
Small Group Total	36	3	8	44	44	89	49	14	4	59	18	78
Female	16	0	13	44	44	88	24	0	4	63	29	92
Male	20	5	5	45	45	90	25	28	4	56	8	64
English Proficient	36	3	8	44	44	89	49	14	4	59	18	78
Economically Disadvantaged	9	0	0	56	44	100	23	22	9	48	22	70
Not Economically Disadvantaged	27	4	11	41	44	85	26	8	0	69	15	85
Not Migrant	36	3	8	44	44	89	49	14	4	59	18	78

Total Cohort Results in Secondary-Level Mathematics after Four Years of Instruction

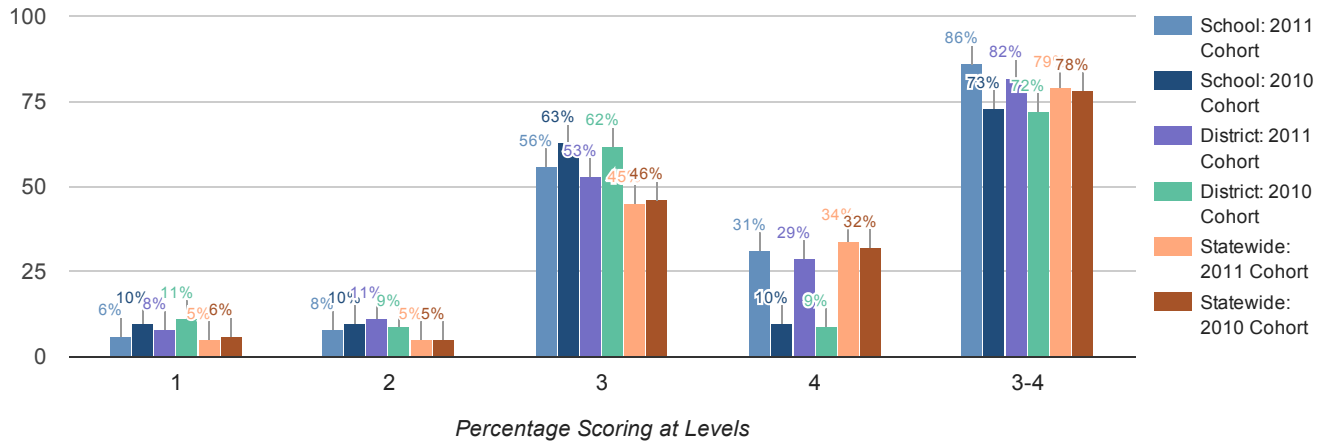
Total cohort results are those for New York State Regents and alternatives to Regents examinations only.



Results by Student Group	2011 Cohort						2010 Cohort					
	Number of Students	Percent Scoring at Level(s)				% Proficient (Levels 3 & above)	Number of Students	Percent Scoring at Level(s)				% Proficient (Levels 3 & above)
		1	2	3	4 & above			1	2	3	4 & above	
All Students	36	0	3	72	25	97	49	16	2	65	14	80
General Education	31	0	0	71	29	100	36	0	0	78	19	97
Students with Disabilities	5	0	20	80	0	80	13	62	8	31	0	31
American Indian or Alaska Native	1	-	-	-	-	-	0	0	0	0	0	0
Asian or Native Hawaiian/Other Pacific Islander	1	-	-	-	-	-	0	0	0	0	0	0
Hispanic or Latino	0	0	0	0	0	0	1	-	-	-	-	-
White	34	-	-	-	-	-	48	-	-	-	-	-
Small Group Total	36	0	3	72	25	97	49	16	2	65	14	80
Female	16	0	0	75	25	100	24	0	4	71	21	92
Male	20	0	5	70	25	95	25	32	0	60	8	68
English Proficient	36	0	3	72	25	97	49	16	2	65	14	80
Economically Disadvantaged	9	0	0	89	11	100	23	26	4	48	22	70
Not Economically Disadvantaged	27	0	4	67	30	96	26	8	0	81	8	88
Not Migrant	36	0	3	72	25	97	49	16	2	65	14	80

Total Cohort Results in Secondary-Level Global History and Geography after Four Years of Instruction

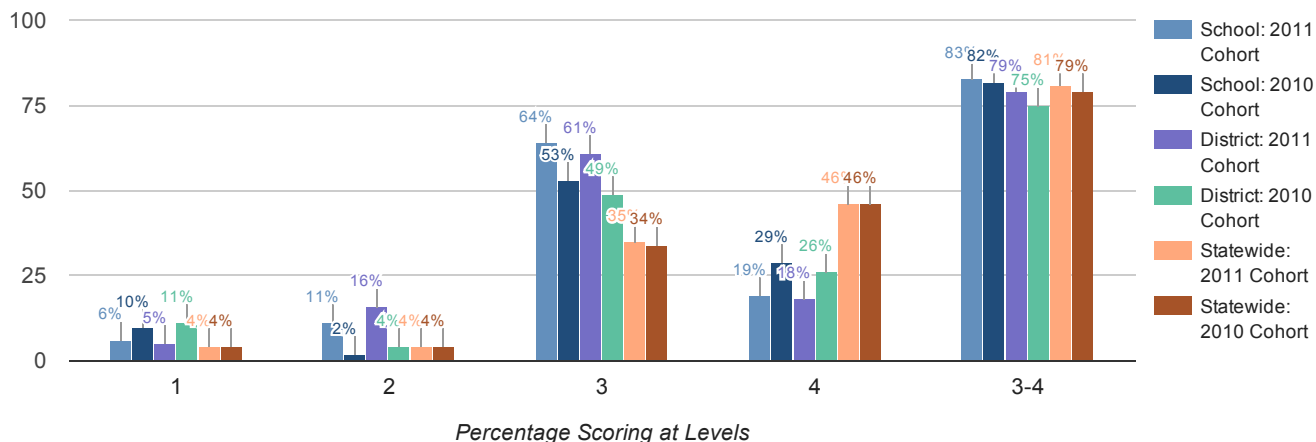
Total cohort results are those for New York State Regents and alternatives to Regents examinations only.



Results by Student Group	2011 Cohort						2010 Cohort					
	Number of Students	Percent Scoring at Level(s)				% Proficient (Levels 3 and 4)	Number of Students	Percent Scoring at Level(s)				% Proficient (Levels 3 and 4)
		1	2	3	4			1	2	3	4	
All Students	36	6	8	56	31	86	49	10	10	63	10	73
General Education	31	0	3	61	35	97	36	0	3	81	14	94
Students with Disabilities	5	40	40	20	0	20	13	38	31	15	0	15
American Indian or Alaska Native	1	—	—	—	—	—	0	0	0	0	0	0
Asian or Native Hawaiian/Other Pacific Islander	1	—	—	—	—	—	0	0	0	0	0	0
Hispanic or Latino	0	0	0	0	0	0	1	—	—	—	—	—
White	34	—	—	—	—	—	48	—	—	—	—	—
Small Group Total	36	6	8	56	31	86	49	10	10	63	10	73
Female	16	6	6	63	25	88	24	4	8	67	17	83
Male	20	5	10	50	35	85	25	16	12	60	4	64
English Proficient	36	6	8	56	31	86	49	10	10	63	10	73
Economically Disadvantaged	9	0	11	67	22	89	23	17	13	57	4	61
Not Economically Disadvantaged	27	7	7	52	33	85	26	4	8	69	15	85
Not Migrant	36	6	8	56	31	86	49	10	10	63	10	73

Total Cohort Results in Secondary-Level U.S. History and Government after Four Years of Instruction

Total cohort results are those for New York State Regents and alternatives to Regents examinations only.

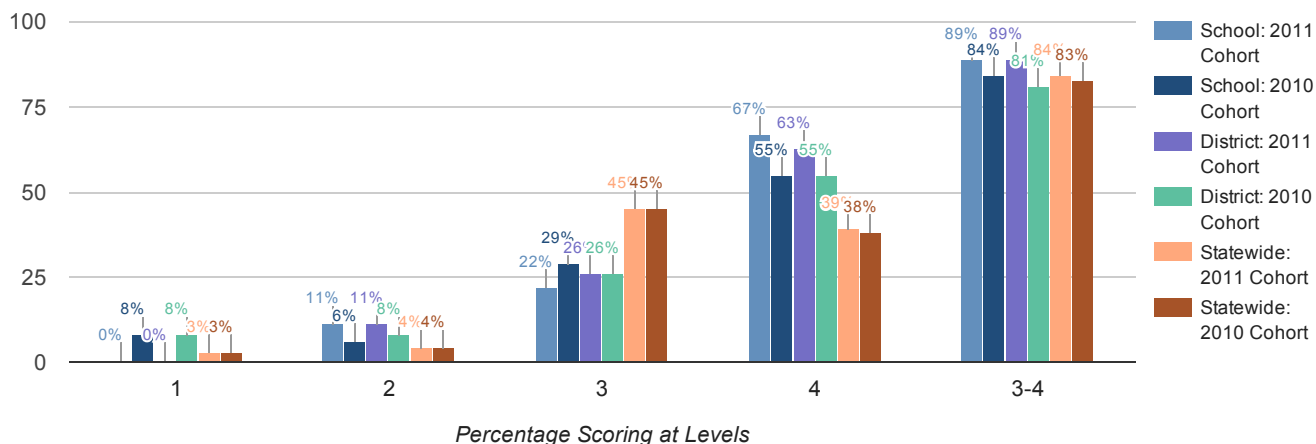


Percentage Scoring at Levels

Results by Student Group	2011 Cohort						2010 Cohort					
	Number of Students	Percent Scoring at Level(s)				% Proficient (Levels 3 and 4)	Number of Students	Percent Scoring at Level(s)				% Proficient (Levels 3 and 4)
		1	2	3	4			1	2	3	4	
All Students	36	6	11	64	19	83	49	10	2	53	29	82
General Education	31	0	3	74	23	97	36	0	0	64	33	97
Students with Disabilities	5	40	60	0	0	0	13	38	8	23	15	38
American Indian or Alaska Native	1	-	-	-	-	-	0	0	0	0	0	0
Asian or Native Hawaiian/Other Pacific Islander	1	-	-	-	-	-	0	0	0	0	0	0
Hispanic or Latino	0	0	0	0	0	0	1	-	-	-	-	-
White	34	-	-	-	-	-	48	-	-	-	-	-
Small Group Total	36	6	11	64	19	83	49	10	2	53	29	82
Female	16	0	19	56	25	81	24	0	4	71	21	92
Male	20	10	5	70	15	85	25	20	0	36	36	72
English Proficient	36	6	11	64	19	83	49	10	2	53	29	82
Economically Disadvantaged	9	0	11	78	11	89	23	13	4	65	13	78
Not Economically Disadvantaged	27	7	11	59	22	81	26	8	0	42	42	85
Not Migrant	36	6	11	64	19	83	49	10	2	53	29	82

Total Cohort Results in Secondary-Level Science after Four Years of Instruction

Total cohort results are those for New York State Regents and alternatives to Regents examinations only.



Results by Student Group	2011 Cohort						2010 Cohort					
	Number of Students	Percent Scoring at Level(s)				% Proficient (Levels 3 and 4)	Number of Students	Percent Scoring at Level(s)				% Proficient (Levels 3 and 4)
		1	2	3	4			1	2	3	4	
All Students	36	0	11	22	67	89	49	8	6	29	55	84
General Education	31	0	3	19	77	97	36	0	0	28	69	97
Students with Disabilities	5	0	60	40	0	40	13	31	23	31	15	46
American Indian or Alaska Native	1	-	-	-	-	-	0	0	0	0	0	0
Asian or Native Hawaiian/Other Pacific Islander	1	-	-	-	-	-	0	0	0	0	0	0
Hispanic or Latino	0	0	0	0	0	0	1	-	-	-	-	-
White	34	-	-	-	-	-	48	-	-	-	-	-
Small Group Total	36	0	11	22	67	89	49	8	6	29	55	84
Female	16	0	19	25	56	81	24	0	0	29	67	96
Male	20	0	5	20	75	95	25	16	12	28	44	72
English Proficient	36	0	11	22	67	89	49	8	6	29	55	84
Economically Disadvantaged	9	0	11	22	67	89	23	13	9	39	39	78
Not Economically Disadvantaged	27	0	11	22	67	89	26	4	4	19	69	88
Not Migrant	36	0	11	22	67	89	49	8	6	29	55	84

Regents Examination Results (2014 - 15)

Results by Student Group	Comprehensive English				English Language Arts (Common Core)					
	Total Tested	Percent of students scoring at or above			Total Tested	Percent of students scoring at				
		55	65	85		Level 1	Level 2	Level 3	Level 4	Level 5
All Students	37	89	70	22	32	16	6	34	9	34
General Education	27	100	89	30	26	8	4	35	12	42
Students with Disabilities	10	60	20	0	6	50	17	33	0	0
American Indian or Alaska Native	1	–	–	–	0	0	0	0	0	0
Asian or Native Hawaiian/Other Pacific Islander	0	0	0	0	0	0	0	0	0	0
Black or African American	0	0	0	0	0	0	0	0	0	0
White	36	–	–	–	32	16	6	34	9	34
Multiracial	0	0	0	0	0	0	0	0	0	0
Small Group Total	37	89	70	22	0	0	0	0	0	0
Female	16	94	81	31	14	7	14	21	21	36
Male	21	86	62	14	18	22	0	44	0	33
English Proficient	37	89	70	22	32	16	6	34	9	34
Economically Disadvantaged	8	88	50	0	6	33	0	33	17	17
Not Economically Disadvantaged	29	90	76	28	26	12	8	35	8	38
Not Migrant	37	89	70	22	32	16	6	34	9	34

Results by Student Group	Integrated Algebra				Geometry			
	Total Tested	Percent of students scoring at or above			Total Tested	Percent of students scoring at or above		
		55	65	85		55	65	85
All Students	22	73	59	0	15	100	93	33
General Education	9	89	89	0	15	100	93	33
Students with Disabilities	13	62	38	0	0	0	0	0
American Indian or Alaska Native	0	0	0	0	0	0	0	0
Asian or Native Hawaiian/Other Pacific Islander	0	0	0	0	0	0	0	0
Black or African American	0	0	0	0	0	0	0	0
White	22	73	59	0	15	100	93	33
Multiracial	0	0	0	0	0	0	0	0
Small Group Total	0	0	0	0	0	0	0	0
Female	8	63	38	0	9	100	89	33
Male	14	79	71	0	6	100	100	33
English Proficient	22	73	59	0	15	100	93	33
Economically Disadvantaged	17	65	59	0	8	100	88	25
Not Economically Disadvantaged	5	100	60	0	7	100	100	43
Not Migrant	22	73	59	0	15	100	93	33

Results by Student Group	Algebra 2/Trigonometry				Algebra I (Common Core)					
	Total Tested	Percent of students scoring at or above			Total Tested	Percent of students scoring at				
		55	65	85		Level 1	Level 2	Level 3	Level 4	Level 5
All Students	17	76	59	12	42	17	10	50	17	7
General Education	17	76	59	12	31	0	6	61	23	10
Students with Disabilities	0	0	0	0	11	64	18	18	0	0
American Indian or Alaska Native	0	0	0	0	0	0	0	0	0	0
Asian or Native Hawaiian/Other Pacific Islander	0	0	0	0	1	–	–	–	–	–
Black or African American	0	0	0	0	0	0	0	0	0	0
White	17	76	59	12	40	–	–	–	–	–
Multiracial	0	0	0	0	1	–	–	–	–	–
Small Group Total	0	0	0	0	42	17	10	50	17	7
Female	8	63	50	13	21	14	10	43	24	10
Male	9	89	67	11	21	19	10	57	10	5
English Proficient	17	76	59	12	42	17	10	50	17	7
Economically Disadvantaged	1	–	–	–	26	27	15	38	15	4
Not Economically Disadvantaged	16	–	–	–	16	0	0	69	19	13
Not Migrant	17	76	59	12	42	17	10	50	17	7

Results by Student Group	Geometry (Common Core)						Global History and Geography			
	Total Tested	Percent of students scoring at					Total Tested	Percent of students scoring at or above		
		Level 1	Level 2	Level 3	Level 4	Level 5		55	65	85
All Students	15	0	20	40	20	20	58	79	53	17
General Education	15	0	20	40	20	20	46	89	65	22
Students with Disabilities	0	0	0	0	0	0	12	42	8	0
American Indian or Alaska Native	0	0	0	0	0	0	1	–	–	–
Asian or Native Hawaiian/Other Pacific Islander	0	0	0	0	0	0	0	0	0	0
Black or African American	0	0	0	0	0	0	0	0	0	0
White	15	0	20	40	20	20	57	–	–	–
Multiracial	0	0	0	0	0	0	0	0	0	0
Small Group Total	0	0	0	0	0	0	58	79	53	17
Female	9	0	33	33	22	11	28	82	64	14
Male	6	0	0	50	17	33	30	77	43	20
English Proficient	15	0	20	40	20	20	58	79	53	17
Economically Disadvantaged	8	0	38	38	13	13	30	73	43	7
Not Economically Disadvantaged	7	0	0	43	29	29	28	86	64	29
Not Migrant	15	0	20	40	20	20	58	79	53	17

Results by Student Group	U.S. History & Government				Living Environment			
	Total Tested	Percent of students scoring at or above			Total Tested	Percent of students scoring at or above		
		55	65	85		55	65	85
All Students	43	93	86	16	37	92	81	41
General Education	36	100	97	19	25	100	100	56
Students with Disabilities	7	57	29	0	12	75	42	8
American Indian or Alaska Native	0	0	0	0	0	0	0	0
Asian or Native Hawaiian/Other Pacific Islander	0	0	0	0	0	0	0	0
Black or African American	0	0	0	0	1	–	–	–
White	42	–	–	–	36	–	–	–
Multiracial	1	–	–	–	0	0	0	0
Small Group Total	43	93	86	16	37	92	81	41
Female	17	94	88	12	17	88	76	35
Male	26	92	85	19	20	95	85	45
English Proficient	43	93	86	16	37	92	81	41
Economically Disadvantaged	8	100	75	13	24	92	75	29
Not Economically Disadvantaged	35	91	89	17	13	92	92	62
Not Migrant	43	93	86	16	37	92	81	41

Results by Student Group	Physical Setting/Earth Science			Physical Setting/Chemistry				
	Total Tested	Percent of students scoring at or above			Total Tested	Percent of students scoring at or above		
		55	65	85		55	65	85
All Students	40	98	83	23	17	100	88	18
General Education	36	–	–	–	17	100	88	18
Students with Disabilities	4	–	–	–	0	0	0	0
American Indian or Alaska Native	1	–	–	–	0	0	0	0
Asian or Native Hawaiian/Other Pacific Islander	1	–	–	–	0	0	0	0
Black or African American	0	0	0	0	0	0	0	0
White	37	–	–	–	17	100	88	18
Multiracial	1	–	–	–	0	0	0	0
Small Group Total	40	98	83	23	0	0	0	0
Female	22	95	82	23	8	100	88	25
Male	18	100	83	22	9	100	89	11
English Proficient	40	98	83	23	17	100	88	18
Economically Disadvantaged	21	100	81	14	1	–	–	–
Not Economically Disadvantaged	19	95	84	32	16	–	–	–
Not Migrant	40	98	83	23	17	100	88	18

Results by Student Group	Physical Setting/Physics			
	Total Tested	Percent of students scoring at or above		
		55	65	85
All Students	15	100	100	53
General Education	15	100	100	53
Students with Disabilities	0	0	0	0
American Indian or Alaska Native	0	0	0	0
Asian or Native Hawaiian/Other Pacific Islander	0	0	0	0
Black or African American	0	0	0	0
White	15	100	100	53
Multiracial	0	0	0	0
Small Group Total	0	0	0	0
Female	5	100	100	60
Male	10	100	100	50
English Proficient	15	100	100	53
Economically Disadvantaged	1	–	–	–
Not Economically Disadvantaged	14	–	–	–
Not Migrant	15	100	100	53

© Copyright 2015 NYSED.